

## Newsletter of Wickepin Shire Council

## THE SHIRE...

2015



## WICKEPIN

Commencing at  
4pm at the  
Wickepin pool.

## TRIATHLON

Saturday 14 February 2015

## Four different courses

- Long (Swim 400m, Bike 14km, Run 3km)
- Short (Swim 200m, Bike 7km, Run 2km)
- Junior (Swim 100m, Bike 1km, Run 1km)
- Mini (Swim 50m, Bike 500m, Run 500m)

Entry Forms  
available from  
Helen Sands or the  
Wickepin CRC.

13 years & under  
Individual or team member

\$5  
\$10

Enquires to Helen Sands  
on 0428 881026 or sand-  
sth@bigpond.com

To order a hamburger at the  
conclusion of the event leave your  
name and the number at the  
Ewen Rural Agencies?



Wickepin  
Triathlon  
Committee

Thank you to our supporters  
The Wickepin Community Fund

THE SECRET LIFE OF WALTER  
MITTYLetter from the Editor

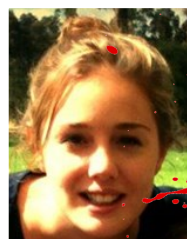
Happy New Year!

Well its been a while since the last Newsletter, a year in fact. How time fly's...and 2014 flew by.

There has been a lot happening within the Shire of Wickepin, especially in the last few months. We have had art competitions and spray painting artists and sculpture workshops, just to mention a few. Looking at our new Community Development Officer, Lee Parker's 2015 wall calendar, 2015 is looking very promising. We will endeavour to keep you up-to-date throughout the year. If you 'like' us on Facebook, you can be easily kept up to speed with all the happenings.

I have been kept busy over Christmas with visits from my English family. Christmas is over, but I have somehow managed to bag myself three pommy 'birds' to help out on the farm. My sister and her friends are backpacking around Australia and have stopped off in Harrismith for a while to do some regional work. You can probably say g'day at the 'O' in Harrismith, their frequent hangout!

Leah Pearson  
Executive Support Officer



WHO HAS BEEN  
SPLATTERED  
WITH PAINT?



## WELCOME LEE!

Lee Parker has commenced employment taking on the role of the Community Development Officer, replacing Natalie Manton who has moved to Finance Manager.

Lee has been with us for a few months now and has settled into her new role well. She kicked off well, starting with the organising and overseeing of the Wickepin Art Prize that took place in October. Lee has volunteered as a coordinator in previous years and committed a lot of her personal time this year, along with Libby Heffernan and Linley Rose.

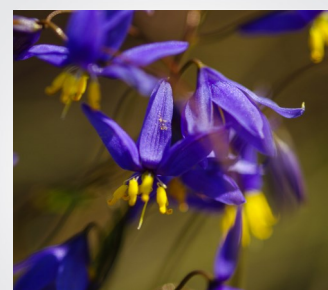
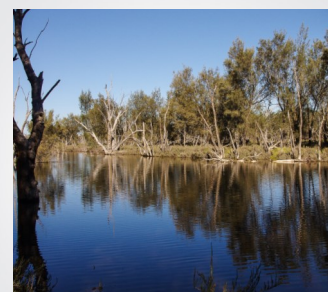
In 2013, Lee won the Shire of Wickepin Citizen of the year award.

Lee has various projects taking place at the moment and many more in the pipeline including the Wickepin War Memorial, the Heritage Walk Trails, Movie Night, Wickepin Cemetery and the new Wickepin brochure.

We would like to welcome Lee to the team and hope she enjoys her time with the Shire of Wickepin.



PHOTOS TAKEN  
BY JANET  
VLAHOV



WATCH  
THIS  
SPACE

Keep an eye out  
for the works  
taking place on  
the Wickepin  
Community  
Centre Car Park

The Wickepin Swimming Pool will be open until March 2015. Damien the Pool Manger will be more than happy to help you with any queries you have.

The opening times are 1.00pm-6.00pm every day.

The swimming pool fees are as follows;

Adult	\$2.00
Child/Pensioner/Spectator	\$1.00
Season Pass - Family	\$120.00
Season Pass - Adult	\$70.00
Season Pass - Child	\$50.00
School Swimming Pool Lessons/Carnivals - For Children	\$0.50

Swimming Pool passes are available from the Shire admin office.

# THE SECRET LIFE OF WALTER MITTY



**Outdoor Movie Night**  
&  
**Thank a Volunteer Event**  
**Saturday 7 February 2014**  
**Yealering Oval @ 6pm**

**RSVP to order hamburgers by 2<sup>nd</sup> February 2015**  
**Wickepin Community Resource Centre: 9888 1500**

**Popcorn, water & juice boxes  
for sale**

**BYO Picnic, torch and deck  
chair.**

**Bus available from Wickepin  
on request, contact the CRC  
for more info.**





WORKSHOPS  
WITH THE  
KIDS!



# JEROME DAVENPORT VISUAL ARTIST COMES TO TOWN...





# Come and celebrate...

## Australia Day BBQ

Monday 26 January 2015 @ 8.00am

Harrismith Golf Club

Cruise on down  
for a FREE brekki  
cooked by your  
Councillors!



Australia Day

# YOUR BUSH FIRE INFO...



DFES  
Department of Fire &  
Emergency Services

## Burning Periods 14/15

**Restricted Burning**  
1 Oct 2014 to 13 Nov 2014

**Prohibited Burning**  
14 Nov 2014 to 7 Feb 2015

**Restricted Burning**  
8 Feb 2015 to 28 Apr 2015

## Bush Fire Volunteers Protective Clothing

Protective clothing is free to members of a Bush Fire Brigade, one per person. A uniform consists of fire retardant jackets and pants and a badge for each brigade.

To obtain protective clothing, come into the Shire admin office where various sizes are kept. The uniforms are designed to be worn over clothes.



Due to the continued professional decisions and actions of all the Volunteer Fire Control Officers including the Chief Bush Fire Control Officer Tim Hefferman, this bush fire season has not seen too many fires within the district.

The small recent fires have been quickly and professionally controlled by both Fire Control Officers and local Fire Volunteers. These actions helped to keep damage to a minimum.

Thank you for your efforts over the entire Bush Fire Season so far and hopefully there will not be any more call outs.

## IN CASE OF FIRE RING 000

## Harvest Ban Hotline: 9888 1312





# wickepin shire admin garden upgrade



Thanks to everyone that participated in the WickEpin Arts Sculpture WorkShops, the Shire of WickEpin admin office gardens are looking great!



Not only have they been upgraded, with the 'mound' flattened and replaced with native plants and a footpath, they have also been beautified with the sculptures from the workShops.



This area is now a great place to have a walk around or even take a seat and take in the wonderful plants.

Thanks to Lee Parker and Lesley Barratt for over-seeing the workShops over the various weekEnds and to the Shire workS crew for all their work on the garden.





## A word from the CEO...

I hope you enjoyed a relaxing holiday break and are ready for some exciting local programs and events starting up in 2015.

I would like to thank the outside workforce for all their hard work throughout the year. Another big thanks also to the inside staff who have also worked extremely hard throughout 2014.

Thank you for all the well wishes after my operation in September. I am now fully recovered and going well, not to mention back to playing bowls!

Thank you to all the volunteers in and around the Shire of Wickepin. Without volunteers, the community would not be thriving as much as it does. From Bush Fire volunteers to community event organisers, every little bit helps. Thank you to all the volunteers that helped to organise the Wickepin Art Prize Weekend. It was an enjoyable weekend, with such a buzz around town with all the different events happening. A special thanks goes to Lee Parker, Linley Rose and Libby Heffernan.

I had the pleasure of meeting Jerome Davenport at the Wickepin Swimming Pool the other day. Jerome is a young talented artist, originally from Wickepin and now living in Perth. Jerome has used his spray painting art skills on the Wickepin Swimming Pool building and has really livened up what was once a very dull looking building. Head down for a swim to check out his work, I can guarantee you will be impressed.

On that note I would like to wish everyone a very happy and safe 2015 and I hope all the sporting groups have a successful year.

**Mark Hook**  
Chief Executive Officer



### President

**Cr SJ (Steve) Martin**

*Retiring 2017*

RMB 134

WICKEPIN 6370

Ph: 9888 6062 Fx: 9888 6092

Mobile: 0428 886 062

Email: [stevemartin63@bigpond.com](mailto:stevemartin63@bigpond.com)

### Deputy President

**Cr JA (Julie) Russell**

*Retiring 2015*

PO Box 41

WICKEPIN 6370

Ph: 9888 1097 Fx: 9888 1007

Mobile: 0428 880 397

Email: [yarlomaDns@westnet.com.au](mailto:yarlomaDns@westnet.com.au)



**Cr GCL (Gerri) Hinkley**

*Retiring 2015*

Post Office

TINCURREN 6361

Ph: 9883 2062 Fx: 9883 2062

Mobile: 0448 830 403

Email: [gerrithomson@hotmail.com](mailto:gerrithomson@hotmail.com)

**Cr WA (Wes) Astbury**

*Retiring 2017*

104 Gate Road

HARRISMITH 6361

Ph: 9883 1021

Mobile: 0427 831 021

Email: [w.astbury@bigpond.com](mailto:w.astbury@bigpond.com)



**Cr MG (Grayden) Lang**

*Retiring 2017*

994 Wickepin-Pingelly Road

WICKEPIN 6370

Ph: 9888 4001

Mobile: 0428 784 001

Email: [brambley1@live.com](mailto:brambley1@live.com)

**Cr FM (Fran) Allan**

*Retiring 2015*

Post Office

YEALERING 6372

Ph: 9888 7071 Fx: 9888 7182

Mobile:

Email: [franallan@westnet.com.au](mailto:franallan@westnet.com.au)



**Cr AG (Allan) Lansdell**

*Retiring 2015*

Post Office

WICKEPIN 6370

Ph: 9888 1449 Fx: 9888 1449

Mobile: 0428 744 033

Email: [a.lansdell@bigpond.com](mailto:a.lansdell@bigpond.com)

**Cr RE (Ross) Easton**

*Retiring 2017*

Post Office

TINCURREN 6361

Ph: 9883 2002 Fx: 9883 2002

Mobile: 0408 788 349

