

# WATERSHED NEWS

PO BOX 60 WICKEPIN WA 6370

ABN 96 234 351 594

A fortnightly paper for the areas of  
Dudinin, Toolibin, Tincurrin,  
Harrismith, Yealering and Wickepin



*11th December 2018*



*Seasons Greetings  
To All*

*From The Watershed News Team*



# WICKY LEAKS

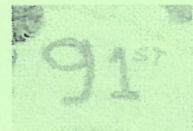
***Watershed News wishes all our readers a safe and happy festive season. Thank you everyone who contributes during the year which makes our local paper a great one! We will resume for the new coming year 2019 on Monday 4th February.***



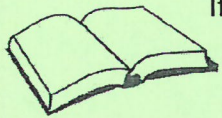
Birthday wishes to: Chad Russell, Coleen Thompson, Leanne Holmes-Martin, Joshua O'Brien, John Menegola, Cameron Lang, Alexander Wilson, Rhys Thorley, Anika White, Mitchell Lang, Amanda Heaney, Alistair Murray, Morgan Spark, Toby Russell, Frances Martin, Samantha McDougall, Jaid Sutherland, Kurtis Butler, Nicola Fleay, Carol Wilson, Alyce Lang.

Sincere apologies to Jean at the Newsagency for not including you in the "thank you's" for suggesting and selling the poppies for Armistice Day. Your display was lovely and all the poppies sold. St John's Ambulance, Wickepin sub branch were delighted with their \$100 donation.

A cheerio to Peter Williamson who has been in hospital for a month. He is now home and doing well. He celebrated his 91st Birthday in hospital on Friday 23rd November.



Also, our best wishes to Peter Bird who has been on the sick list. Hope all is going well.

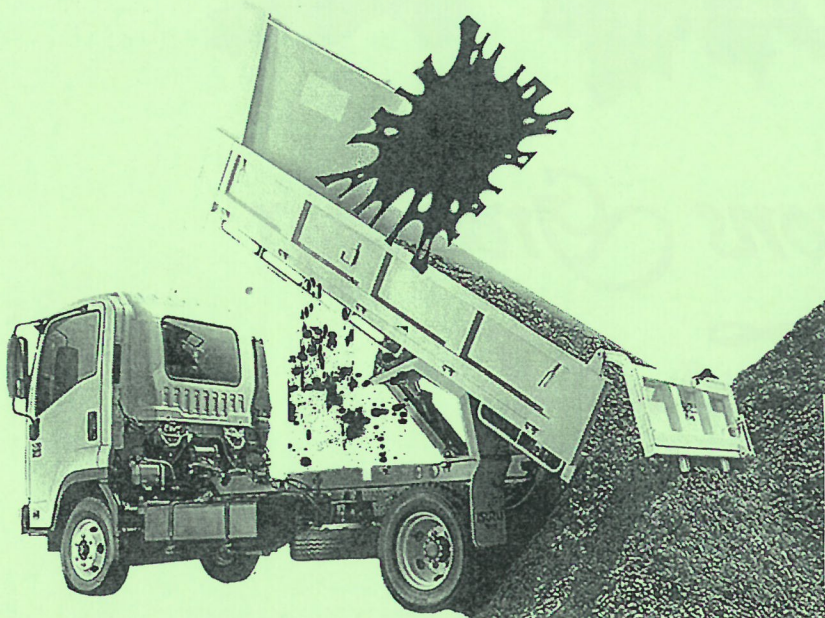


If anyone would like their names included in the birthday greetings and have not already let the Watershed News know, please advise us prior to your birthday. Your name and birth date will be written in a book and included at the appropriate time each year.

We send our love and best wishes to Bree Short, our school principal, who is moving to Perth. All the best Bree.

To all students and school staff we wish you happy and safe holidays.

Watershed News had their Christmas windup lunch on Sunday 2nd December at Cuballing Hotel. The table looked lovely with its Christmas decorations. Main meal was a traditional Christmas lunch - pork, ham, lots and lots of roast vegetables. Sweets were Christmas pudding with brandy custard or reconstructed pavlova. Yummy from all around the table tells us the happiness from all that attended.



**Watershed Team**

Back: Ella Davenport, Pam Carden, Sandra Podmor  
Judy Lock, Ruth Bailey  
Front: Denise Corke, Elaine Bushby, Hazel Green  
Missing: Claire Bayley, Karen Williamson,  
Daphne McKenzie

**Oil content in Barley was high in a load at Wickepin last week!**



## *Senior Citizen's Christmas Lunch*

Friday 30<sup>th</sup> November saw a lovely gathering of Senior Citizens at the Wickepin Community Centre to celebrate Christmas at our annual Senior's Christmas Lunch. Sponsored by the Wickepin Shire, this event is held for our Senior Citizens so that they can celebrate Christmas together and enjoy lunch that is prepared and served by our younger citizens.

Claire, assisted by Alan, undertook the duties of M.C. for the day and it was terrific to see most of the regular seniors, plus a few new faces. We missed those who were unable to be with us for various reasons but we were thinking of you all and we're hoping that you all will be able to join us again next year.

Phil put out all of the tables and chairs in readiness for Claire, Karen & Ronnie, who undertook the duty of "decorations & table setting". The Community Centre was turned into a "Christmas Hall" with delightfully decorated tables set with white Geraldton Wax flowers in vases, bowls of nibbles and lovely "Lolly Bags", made by Barbara Thompson. The delightfully decorated tree was placed at the end of the room, with the cake and the photo albums of previous year's photos were placed on tables next to the tree.

Julie co-ordinated the food and was joined in the kitchen by Sandra, Ros, Shirley, Jill and Kayleen, who together created a delicious roast lunch followed by yummy fruit salad or Christmas pudding with brandy sauce, and of course, lots of cream, for dessert. This was washed down with refreshing cold punch and hot tea and coffee, and of course, The Christmas Cake.

The Message of Grace was received from Ella, and to remember those who could not be with us, before everyone made their way to the servery to collect their main course.

We were delighted to again welcome Charlotte Astbury who played beautiful background Christmas Carols with her keyboard. Also Frank and Mary Heffernan who entertained us with 3 poems written and read by Frank. A big "Thank You" to Charlotte, Frank and Mary and we look forward to seeing you all again next year. Alan then took the stand with poetry recital before updating the guests on some of the activities that Council undertake on behalf of the Community and Shire of Wickepin.

Thank You also to the very generous business houses in both Wickepin and Narrogin who donated some lovely "surprise gifts" for the ticket draws. These were organised by Claire and won by several lucky ticket holders, who managed to not lose their tickets in the flurry of all of the activity and chatter.

The Christmas Cake, which was made by Judy and iced by Jody Matthews, was cut this year by Eric Fleay.

Each year we take some lovely photos of all who attend our Christmas lunches and have some beautiful snaps dating back to 2013. These are displayed in photo albums that are kept at the CRC Centre, along with the CD discs, and are available for anyone who may wish to have a copy of their Loved Ones.

Everyone loves photos, and it is pleasing that we get some "fantastic smiles" when they all see the camera coming along.

BIG THANKS to All who helped to make the day a success – The Wickepin Shire, Karen, Claire, Sandra, Julie, Shirley, Ros, Jill, Kayleen, Phil, Ella, Frank, Mary, Judy, Jody, Barbara and Alan and all who helped in the clean-up afterwards.

***We wish you all a very Merry Christmas and Happy New Year, and see you all for lunch in 2019.***

# SENIOR CITIZENS CHRISTMAS LUNCHEON 2018



Coleen & John Thompson



Keith Bushby & John Menegola



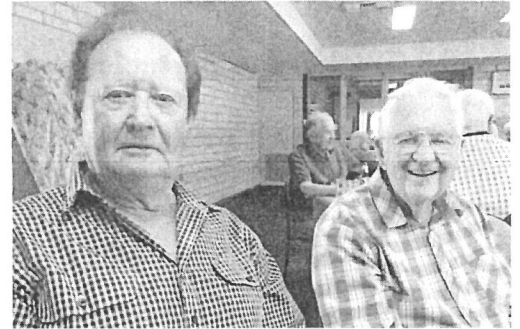
Phil Watson & Hazel Green



Colin & Murray Lang



Margaret & Eric Fleay



Ray Lewis & Frank Heffernan



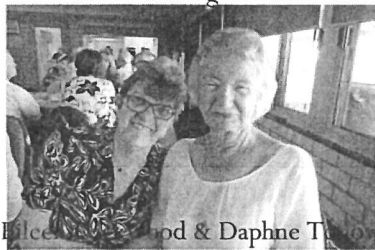
Claire cutting the cake



Mavis McColl & Eileen Lockwood



Ron & Shirley Timms



Eileen Lockwood & Daphne Timms



Ella Davenport & Anne Lewis



Murray Lang & Allan Lansdell



The Girls' table



Frank & Mary Heffernan



Pat & Laurie Steele



Sandra, Shirley & Karen in the kitchen



Helen Warrilow & Frank Bird



Jennifer McLaughlin & Elaine Bushby



Lovely gladiolas courtesy of Joy Hemley



# SENIOR CITIZENS CHRISTMAS LUNCHEON 2018



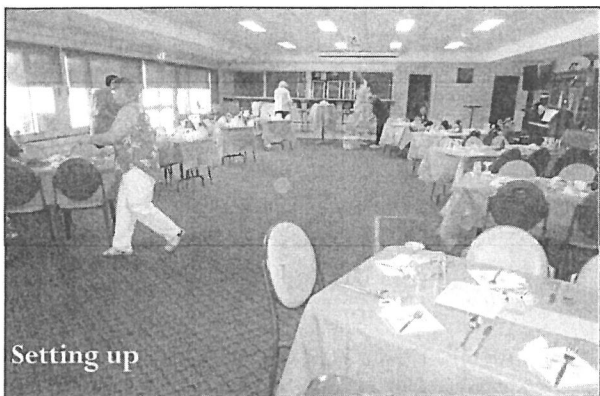
Ella Davenport says grace



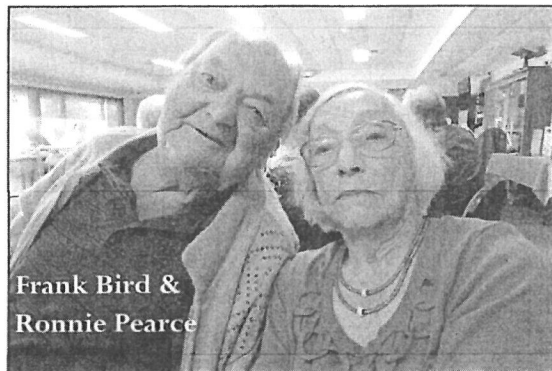
Charlotte Astbury entertained us



Colin Marsh & Jeanette Pender



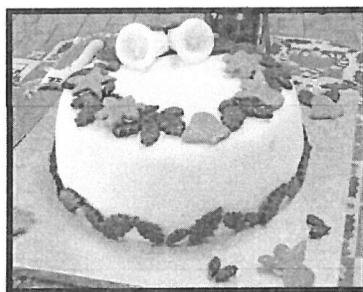
Setting up



Frank Bird & Ronnie Pearce



Judy Lang & Doss Fleay



Karen & Claire decorate the tree



Ruth Bailey & Jessie Davey



Hard workers in the kitchen



Eric Fleay cuts the cake accompanied by Julie



Shirley Timms & Joan Wyllie



Photos of past Christmas lunches



## DARWIN/THE GHAN/ADELAIDE

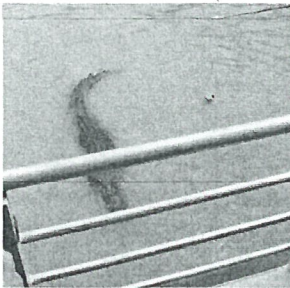
On 17<sup>th</sup> November, Keith and Elaine Bushby & Mavis McColl were due to fly to Darwin for the start of a 10 day holiday. The evening before our flight, a little birdie whispered in my ear to check flights. A very fortunate decision as the flight had been cancelled due to maintenance. So, it was the following day that we left for Darwin.



A very pleasant flight on Virgin and we arrived in the lovely steamy city late afternoon. A bus delivered us to our accommodation at the Travelodge. Accommodation was pleasant and we had complimentary breakfast on the 3 mornings we were in Darwin.

We were to take a trip to Litchfield Park but were advised by AAT Kings that the walk there was quite long and over rocky ground, which wasn't suitable for us.

The following day we experienced a much more gentle tour by visiting the "jumping crocodiles". Knuckles, minus some of his tail, was the only partaker of the food offerings and took some time before getting the energy to jump high enough to get the tasty morsel. However, Pearl, an albino croc, also came to visit but was intimidated by the bigger Knuckles and she soon disappeared. On the way to the crocodiles we drove through some beautiful countryside where we saw buffalos, cows and calves feeding in the lush green pasture, and there were many water courses with massive big water lilies growing.



Crazy bus driver



Part of several acres of water lilies and a cormorant hanging out his washing

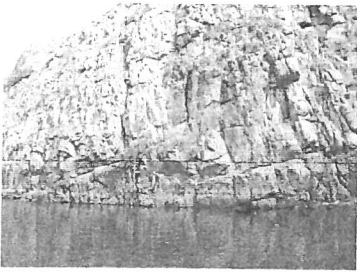
We enjoyed the pool. The water was like a warm bath, much to our liking as none of us enjoy cold water swimming. A little bit of indulgence here, relaxing on a poolside lounge sipping cold drinks.



So, three days later we were collected by bus and taken quite a way out of Darwin to board the Ghan. The train had two diesel engines and was a total of almost one kilometre long. A big beast. Mavis was in carriage A which housed the single accommodation, Keith and I were in B carriage. The single accommodation is very small and not too comfortable, while our double accommodation was great. A lounge in the day and while at dinner, staff would make up the bunks for sleeping, with a lovely mint chocolate on the pillows.

We needed to walk through another two carriages to get to the lounge then the next carriage was the lovely Queen Adelaide dining room. One could have as many drinks as needed at no extra cost. The meals were 3 courses with smaller serving portions, and there was a huge variety of meals. Not all to our liking, but good to try different foods, for example Kangaroo, Duck salad or creamy coconut and vegetable laksa was the choice one lunch time.





Our first off-train excursion was in Katherine where we took a small boat ride up part of the Katherine Gorge. There are several sections to the stunning gorge and the boats stop at a certain place then one has to walk to get to the next section due to the amount of rocks across the river. It was an extremely humid day when we took our trip but it was pleasant all the same.

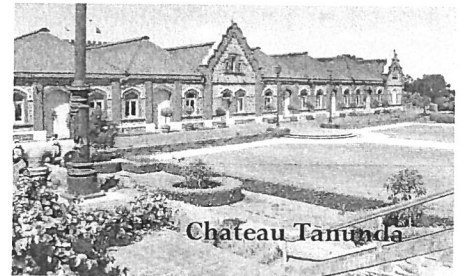
At one stage we were held up for about an hour waiting for a goods train to pass. There are a couple of places where the lines split into two to allow the passing of trains travelling in opposite directions.

Our second off-train excursion we chose to do the Alice Springs town tour. As well as being taken around the town, we visited the very interesting School-Of-The-Air which was in progress while we were there and the Overland Telegraph Station.

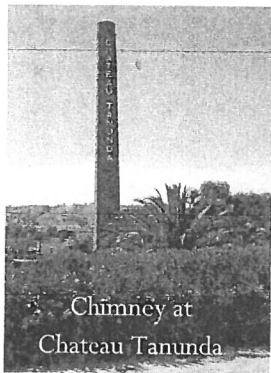
Friday 23<sup>rd</sup> saw us arriving into Adelaide, 2 hours late, and we had a private car to take us to the Mecure Hotel in Adelaide. Keith and I shared a tiny Queen bed room where Mavis was allocated a palace of a room. That was her reward for staying in the single accommodation on the train!! While Keith had a rest, Mavis and I found the shops. Had some fun anyway. Then for dinner at the Casino which was directly across the road from the Mecure. No gambling, just ate.

On our final day we were taken on a wine tour – why not when in South Australia. We had a lovely bus driver, Inez, and there were only seven of us on the bus. We were treated to 3 wineries, lunch and cheese tasting. The most renowned winery –

Chateau Tanunda – was wonderful with a lovely story to go with it. About the chap who bought it, bought a run down 3 storey old building with lots of renovations needed. There is a lovely space inside and outside for weddings, a croquet court and a cricket ground. However, the employee at the Chateau seemed very knowledgeable about the wines and went to lengths to explain about the different wines and offered us all of the wines without hesitation. Other places we have visited ask us what we like but there is no explanation of what happens around the vineyards. A real treat. I must add that the amount of wine tasted was very minimal.



Chateau Tanunda

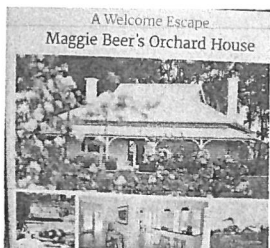


Chimney at Chateau Tanunda

Complimentary breakfast at the Mecure as well. A free day so we hopped on a tram and travelled half an hour to Glenelg—a beachside suburb. Loads of people around this day as the Life Saving World Championships were being held. A contrast in weather now—cooler and some rain compared to the heat of Darwin.

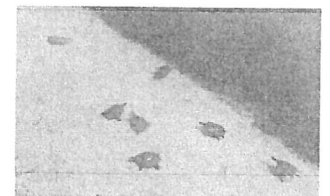


Before returning to our hotel, we were taken to Maggie Beer's place. This is where the program "The Chef and the Cook" is filmed. Her shop is filled with her relishes, sauces, ice cream and novelties. There is a verandah off to one side of the building overlooking a large lake. Close to shore in the clear water, we counted 11 turtles. They were delightful to see.



A Welcome Escape  
Maggie Beer's Orchard House

Monday 26<sup>th</sup> – taxi to airport after breakfast and boarded our Virgin flight back home. Back in Wickepin by 5.30pm.



A good holiday.





# What's On In Wickepin Shire

## **Mondays:**

Watershed News -Resumes 4th February 2019

Morning Swimming 6am-7am

Every 3<sup>rd</sup> Monday Wickepin Community Resource Centre Committee Meeting @ 5.30pm.

Body Pump 5pm-6pm @ Wickepin Community Centre

Every fortnight Watershed Wanderers-7pm-9pm @ Wickepin Hall

## **Tuesdays:**

Shedders ~ @ Old Recycling Shed Richter St~ 9am

Fit-Pursuit ~ 9.15am ~ 10am Community Centre

Pathology Service~ Appointment Only @ Wickepin Health Centre

Water Aerobics-5pm

## **Wednesdays:**

Morning Swimming 6am-7am

Every Wednesday~ Social Arts & Crafts @ 9.30am ~ Joyner St

Body Combat~5.30pm @ Wickepin Community Centre

## **Thursdays :**

Fit-Pursuit ~ 6.00am ~ 6.45am @ Wickepin Community Centre

Playgroup ~ Playgroup Building during school term- 9.30am-11.30am

Yogalates @ Community Centre 10.30am-12 noon.  
(No classes held during school holidays)

## **Fridays:**

Morning Swimming 6am-7am

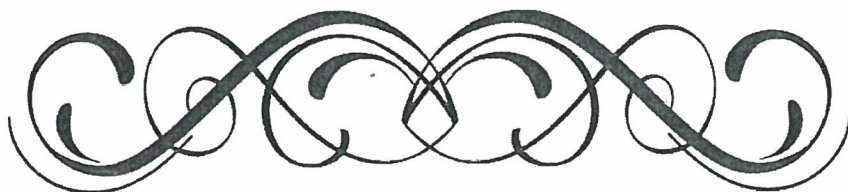
“Be Active” Exercises -Wickepin Community Centre ~ 9.30 -10.30am

## **Saturdays:**

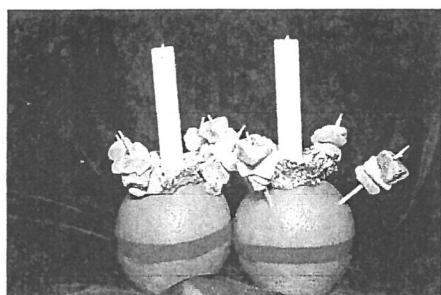
Banksia Bowmen Archery- Wickepin Community Centre @ 9am  
Club Equipment Available

## **Sundays:**

Anglican Church every 1<sup>st</sup> & 3<sup>rd</sup> Sunday @ 8am  
(No services in January 2019)







ST JOHN'S ANGLICAN CHURCH  
JOHNSON STREET  
WICKEPIN

## CHRISTINGLE AND CAROL SERVICE

8.00AM

SUNDAY 16th DECEMBER

ALL DENOMINATIONS WELCOME



ST JOHN'S ANGLICAN CHURCH  
JOHNSON STREET, WICKEPIN

CHRISTMAS DAY SERVICE

WILL BE HELD AT 8.00AM

TUESDAY 25th DECEMBER

ALL DENOMINATIONS WELCOME



This will be the last service held for 2018.  
There will be no Church services in January 2019.  
Services resume 3rd February 2019



The Facey Group would like to invite our  
members and sponsors to the

## ***Facey Group Christmas Party***

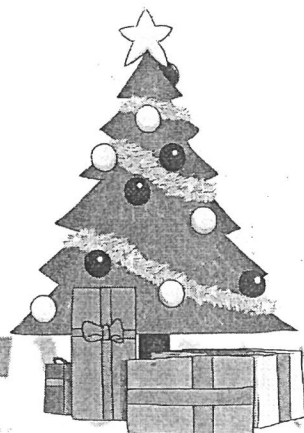
**Thursday 20th December**

**Wickepin District Sports Club**

**5.30 pm - 9 pm**

**A light meal and some beverages will be supplied.**

**Please RSVP by Friday 14th December to Facey Group on  
9888 1223 or [admin@faceygroup.org.au](mailto:admin@faceygroup.org.au) for catering purposes.**





# COUNCIL NOTES 11 DECEMBER 2018



Christmas wishes! Council would like to wish all residents a Merry Christmas and a Happy New Year! We encourage residents to plan ahead this bushfire season and take safety precautions around the home. Have fun and stay safe!

## **2018 CHRISTMAS TRADING HOURS AT THE SHIRE OF WICKEPIN**

Friday 14 December	Closing @ 3pm
Thursday 20 December	Open
Friday 21 December	Closing @ 4pm
Monday 24 December	Closed
Tuesday 25 December	Closed – Public Holiday for Christmas day
Wednesday 26 December	Closed – Public Holiday for Boxing Day
Thursday 27 December	Closed
Friday 28 December	Closed
Monday 31 December	Closed
Tuesday 1 January	Closed – Public Holiday for New Year
Wednesday 2 January	Open



## **REPRINT: FALLEN BUT NOT FORGOTTEN**

FALLEN BUT NOT FORGOTTEN the historical book highlighting soldiers and their stories from our district, written by Stefanie Green, has sold out. If you have not yet secured your copy Stefie will be doing a reprint, contact her on 9888 1178 to order yours. A great gift for Christmas.



## **2018 COMMUNITY AWARDS: NOMINATIONS DUE 14 DECEMBER 2018**

The Shire of Wickepin Community Awards is an opportunity to share stories and to celebrate them. Persons who have made a noteworthy contribution during the current year and/or given outstanding service to the community over a number of years, through commerce, tourism, sport, volunteer work, etc shall be eligible. Nomination forms are available from the Shire office or at [www.wickepin.wa.gov.au](http://www.wickepin.wa.gov.au).

Awards will be presented at the Australia Day breakfast in Yealering on Saturday 26 January 2019.

- Citizen of the Year Award
- Young Citizen of the Year Award
- Senior Citizen of the Year Award
- Community Group Award
- Progressive Agricultural Award - Facey Group



77 Wogolin Rd, PO Box 19 WICKEPIN 6370

Phone: 9888 1005 Fax: 9888 1074

[admin@wickepin.wa.gov.au](mailto:admin@wickepin.wa.gov.au) [www.wickepin.wa.gov.au](http://www.wickepin.wa.gov.au)



# COUNCIL NOTES 11 DECEMBER 2018

## WICKEPIN SWIMMING POOL

Opening times are 1.00pm - 6.00pm every day.

A reminder that the pool will be closed Christmas Day.



## COTTAGE HOMES – VACANT UNITS

Council currently have 2 x 1 bedroom units available for rent. Please contact the Shire Office for further information.

## HARVEST BAN ALERTS – VIA SMS

If you would like to register your number to receive these text messages, or to have your number removed from the system, please contact the Shire office on 98881005 or email your details to [admin@wickepin.wa.gov.au](mailto:admin@wickepin.wa.gov.au).

Harvesting is banned on Christmas Day and New Year's Day.



## BUSH FIRE UNIFORMS

A reminder to Bush Fire Volunteers: Bush Fire uniforms are available from the Shire of Wickepin admin office with one free uniform per registered brigade volunteer.

## WICKEPIN-PINGELLY ROAD RECONSTRUCTION

Reconstruction of the section of road from Inkiepinkie Road is in progress. Road users are urged to take extra care and adhere to road warning signs when driving through the road works.

## UPCOMING CALENDER

### DECEMBER

**Fri 14 December**

Nominations close for 2014 Community Awards @ 4.00pm  
Staff Christmas Party – office closes @ 3.00pm  
Community Christmas Tree @ Wickepin Community Centre  
Australia Day Committee meeting @ 12.00pm  
Ordinary meeting of Council @ 3.00pm

**Sun 16 December**

**Wed 19 December**

**Wed 19 December**

### JANUARY

**Wed 2 January**

**26 Jan 2019**

Office open for 2019  
Australia Day BBQ Breakfast and Community Awards 2019

### FEBRUARY

**Sat 23 February**

Wickepin Triathalon

77 Wogolin Rd, PO Box 19 WICKEPIN 6370

Phone: 9888 1005 Fax: 9888 1074

[admin@wickepin.wa.gov.au](mailto:admin@wickepin.wa.gov.au) [www.wickepin.wa.gov.au](http://www.wickepin.wa.gov.au)

# Thank You!

## The Annual Seniors Christmas Luncheon

was held on Friday 30th November

and kindly hosted by the Shire of Wickepin

Many thanks to the following for making it such an enjoyable occasion.

- Shire President Julie Russell
- To all the many merry helpers/volunteers who assisted on the day
- The local businesses who donated prizes:  
Jayden at the Wicky Co-Op, the Manager at the Hotel,  
Beth at the Post Office, Jean at the Deli,  
The girls at the CRC and Wickepin Rural Services.



Q : What did the Christmas light say to the other Christmas light?

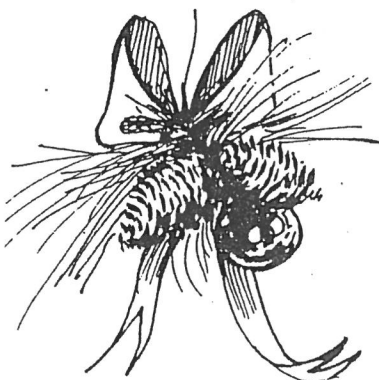
A : You light me up!

Q : Which reindeer needs to mind his manners the most?

A : 'Rude'olph

Q : How does Santa Claus take photos?

A : With his North Pole-roid.





# Christmas Cookery

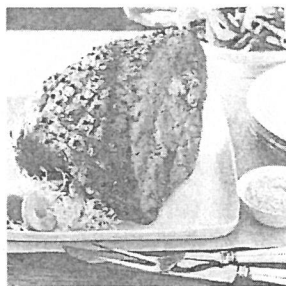
## Christmas ham- Glazes

### Maple Honey Mustard Glaze

100g (1/2 cup, firmly packed) brown sugar  
80ml (1/3 cup) maple syrup  
80ml (1/3 cup) honey  
1 tablespoon Dijon Mustard  
1 (about 8kg) whole leg ham, on the bone  
Whole cloves, to stud

### Sherry Glaze

1/2 cup honey  
3 teaspoons french mustard  
2 tablespoons dry sherry  
2 teaspoons soy sauce  
1/4 cup brown sugar  
whole cloves to stud  
250g glace cherries to stud



### Method

1 (about 8kg) whole leg ham, on the bone

Stir all the ingredients in a bowl until the sugar dissolves.

Preheat oven to 170C. Line a large baking dish with 2 layers of non-stick baking paper. Place an oven shelf in the lowest position. Remove all other shelves. Use a sharp knife to cut around the shank of the ham, about 10cm from the end. Run a knife under the rind around edge of ham. Gently lift the rind off in 1 piece by running your fingers between the rind and the fat. Score the fat in a diamond pattern, about 5mm deep. Stud the centres of the diamonds with cloves etc. Transfer to prepared dish.

### To store your Christmas ham.

Soak a ham bag or pillow case in water and 2 tablespoons of vinegar.

Wring out excess water and place ham in bag. Store in fridge.

Resoak bag in water & vinegar every few days or when ham bag dries out.

### Spiced Honey and Orange Glaze

3/4 cup orange juice  
1/2 teaspoon nutmeg  
1 cup honey  
1 cup orange marmalade sieved  
1/4 cup Grand Marnier or whisky  
cloves to stud

### Apricot Glaze

3 cups water  
1 cup from jar apricot preserves  
1/4 cup brown sugar  
2 tablespoons grainy Dijon mustard  
1 tablespoon cider vinegar

## Classic Christmas trifle

2 x packets raspberry jelly crystals  
500 gram small strawberries  
250 gram raspberries  
200 g sponge cake, cut into 3cm cubes  
1/3 cup (80ml) sweet sherry  
500 g mascarpone cheese  
2 x 500g cartons vanilla bean custard  
600ml thickened cream  
2 tablespoon icing sugar  
2 tablespoon flaked natural almonds, roasted

### Method

Make jelly according to directions on packet; pour into a 3 litre (12-cup) glass serving bowl.

Cut 250g of the strawberries in half; add to the jelly with half the raspberries. Refrigerate for 1 hour or until jelly is almost set.

Place cake in a medium bowl, sprinkle with sherry; toss to coat.

Beat mascarpone and custard in a large bowl with an electric mixer until soft peaks form. Spoon custard mixture over jelly, then top custard with sherry-soaked cake. Beat cream and half the sifted icing sugar in a large bowl with an electric mixer until soft peaks form. Spoon cream over cake. Serve trifle topped with remaining raspberries and strawberries, then flaked almonds. Dust with remaining icing sugar.



Dear Editor,

I feel fortunate indeed, to have bought 11 Collins Street garden block almost a year ago.

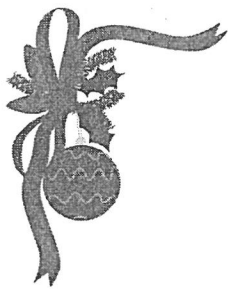
What a happy, resilient community you are !

Thankyou to everyone who, in their own way, has welcomed us into Wickepin.

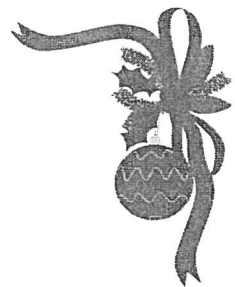
The generous acts of kindness, from service personnel and residents, make one immediately begin to feel 'local' and engaged !

Best wishes for the Season.

Louie & Geoff Gamble



*Jean and staff from  
The Wickepin Newsagency*



*wish everyone a very Merry Christmas and  
a safe and Happy New Year.*

ubject: Did you know the saying....

Did you know the saying "God willing and the Creek don't rise" was in reference to the Creek Indians and not a body of water? It was written by Benjamin Hawkins in the late 18th century. He was a politician and Indian diplomat While in the south, Hawkins was requested by the President of the U.S. to return to Washington . In his response, he was said to write, "God willing and the Creek don't rise." Because he capitalized the word "Creek" it is deduced that he was referring to the Creek Indian tribe and not a body of water.

\*\*\*\*\* \*\* \*\*

In George Washington's days, there were no cameras. One's image was either sculpted or painted. Some paintings of George Washington showed him standing behind a desk with one arm behind his back while others showed both legs and both arms. Prices charged by painters were not based on how many people were to be painted, but by how many limbs were to be painted. Arms and legs are 'limbs,' therefore painting them would cost the buyer more. Hence the expression, 'Okay, but it'll cost you an arm and a leg.' (Artists know hands and arms are more difficult to paint)

\*\*\*\*\*

Ladies wore corsets, which would lace up in the front. A proper and dignified woman, as in 'straight laced' wore a tightly tied lace..

*"If you don't have a dream,.. how you gonna have a dream come true ?!"  
- South Pacific*





## Yealering Mo Bros

Congratulations and well done to the Yealering Mo Bros who held another very successful BBQ and auction at the Yealering Hotel on Saturday the 1st December which raised over \$21,000.00. This event has been hosted for the last ten years and has raised well over \$150,000.00 in total for the Movember cause promoting Mens Health.

The idea to have the auction and social evening was the brainchild of Irish (Alan Longstaff) who was a shearing contractor in Yealering at the time, and in 4 days the first Movember fundraiser was planned and hosted. From then on, the evening held on the first Saturday after the end of November, just got bigger and better raising an amazing amount of money while providing a great social evening.

This was all made possible by the publicans Stribbo (Peter Stribling) and Tanya Sands who were happy to host the event and to the many, very generous contributors of the auction items who donated such a variety of things including header cleaning, holiday accommodation, golf days, Hopman Cup tickets, Basketball tickets Gourmet packages, footy tickets, artwork, motorbike servicing, auto electric gadgets, lucerne chaff, pea hay, woodwork, patchwork quilts, aerial photo of Yealering, limesand, and the greatest donator Hillco Transport that has donated lime, carted and spread for the ten years of the fundraiser. Thank-you to all the contributors that have made the auction the great success that it has been.

A special mention has to be made to Yogi (Kim Melvin) who has been the very entertaining auctioneer for the duration of the event, he has managed to sell everything that has been put up at prices way beyond their value, all because of the generosity of the people attending. Also to Toad (Graeme Manton) who has been the team Captain collecting all the auction items, cataloguing them (with the help of Yogi) and organising everything along with his very loyal helpers ----

**The Yealer ing MO BROS**



## Classified

**Wanted:** Bar Fridge, Dress Rack.  
Ph: Janice: 0474 957 327

**Wanted:** Firewood Bench Saw - any condition. What's out there?  
Ricky Dougall Ph: 0417 363 528

**For Sale:** Wool Press – Electric TPW – Autoflow - Manual Pinner  
Wool-Table – Circular (top needs repair)  
New 205Lt BP Oil OMG 15/40  
Allan Ph: 0417984226 reasonable offers, proceeds to St John Ambulance Wickepin Sub Centre

### WE WANT YOUR ADS!

To advertise any item in the Watershed Classifieds is free for two weeks,  
so send in your ads!

Email your ads to [watershed@wn.com.au](mailto:watershed@wn.com.au), drop them at the Community Resource Centre  
or fax to 9888 1588

# MERRY CHRISTMAS

**HZ** **ARRIS**  
**UGLIAN**  
EC004116  
**ELECTRICS**



Dot

383 Walton Street  
Corrigin WA 6375  
Ph: 9063 2911  
Fax: 9063 2922  
Email: [hzelectrics@bigpond.com](mailto:hzelectrics@bigpond.com)



Aaron



Cindy



Gary



Liam

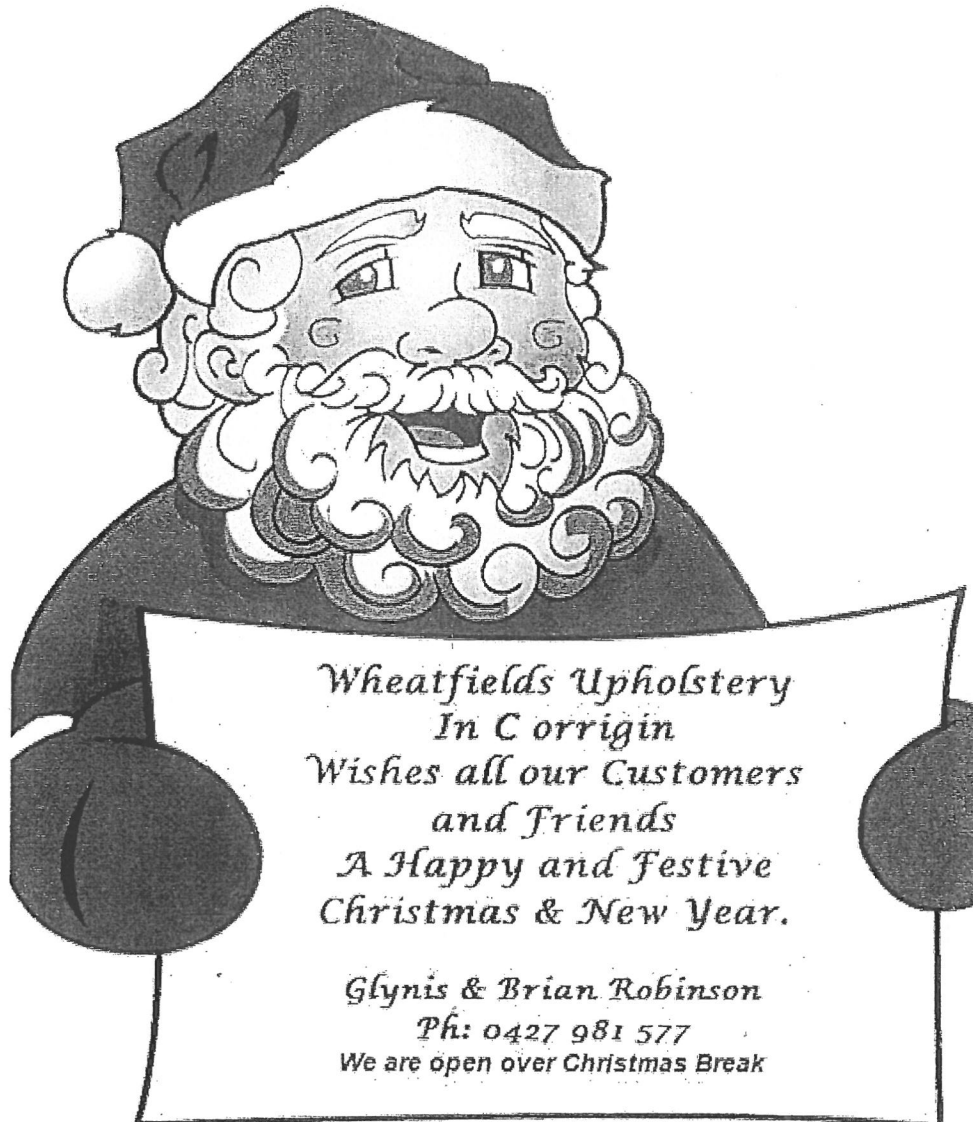


Sparkles

We wish you and your loved ones a very Merry Christmas  
and a safe & Happy New Year.

From us all at HZ's, Gary, Dot, Aaron, Cindy & Liam

PS: And Sparkles X X X



Wheatfields Upholstery  
In Corrigin  
Wishes all our Customers  
and Friends  
A Happy and Festive  
Christmas & New Year.

Glynis & Brian Robinson  
Ph: 0427 981 577  
We are open over Christmas Break



## Child Care now open in Wickepin



Regional Early Education and Development (REED)  
formally known as Narrogin Mobile Occasional Care  
has now re-opened.

The new opening hours are 8.30 until 4.30.

The service will be offering long day care and after school care on a Monday and Tuesday.

For all enquiries please e-mail [ngnmobile@westnet.com.au](mailto:ngnmobile@westnet.com.au)  
Ph: 0447 507 342

### **JOJO's Recycling Boutique**

is moving to

Egerton Street Narrogin

(opposite Target)

Opening on the 5th December 2018

All Welcome



**GENSET**  
hire and sales australia

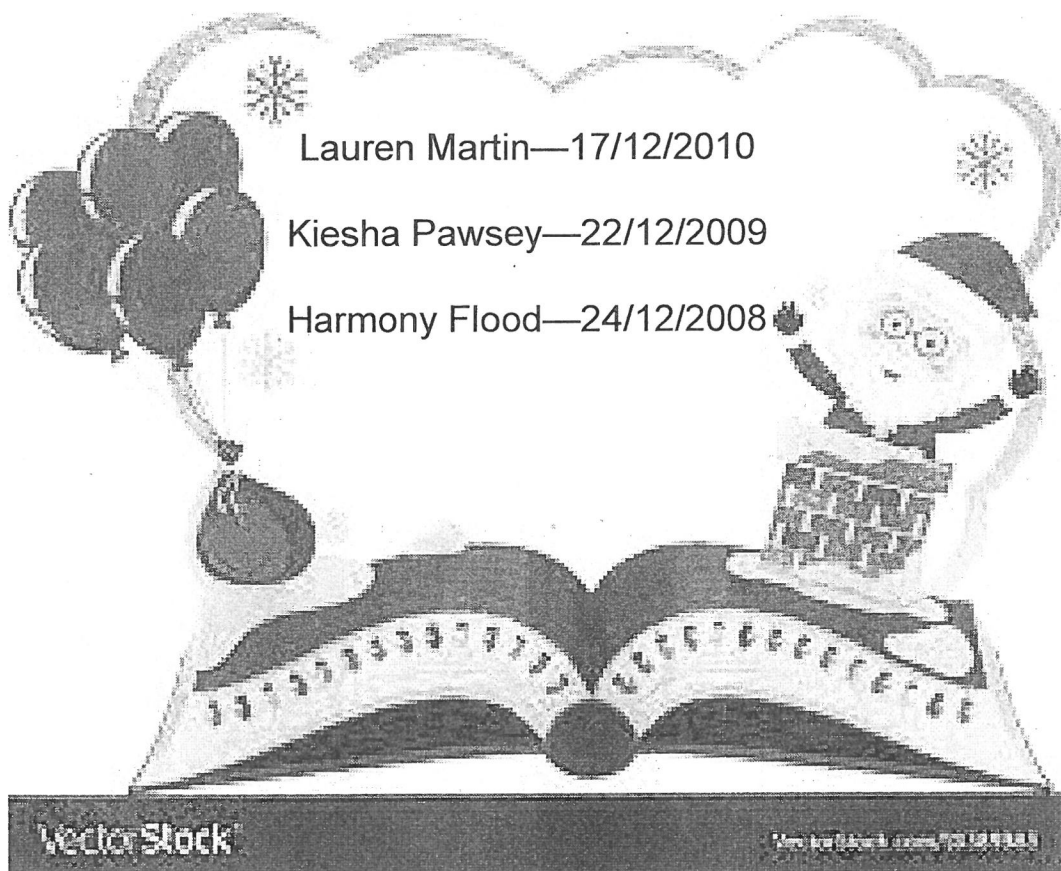
For all your Generator and fuel Tank needs  
Hire or Purchase

WA Agents for FES Tanks  
Fuel Equipment Specialists

Ring Mark on 08 9359 1988

For local contact ring Phil 0428881156 or Hazel 0427881156

# HAPPY BIRTHDAY



Jayden Podmore Smith—2/1/2010

Emma Rance—4/1/2017

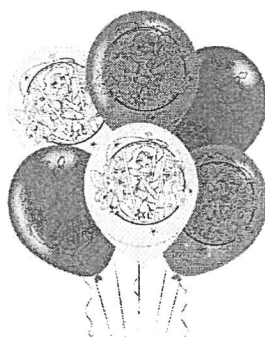
Lucy Lansdell—4/1/2013

Abbey Steere—5/1/2009

Lily Hallet—7/1/2010

Waylon Hallet—7/1/2010

Lexi Mutton—11/1/2009



Alice Marsh—20/1/2011

Lucas Snow—27/1/2009

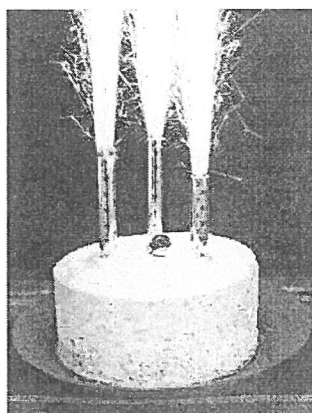
Marley Steere—30/1/2012

Jordee Pike—30/1/2009

Makenzie Rance—31/1/2012

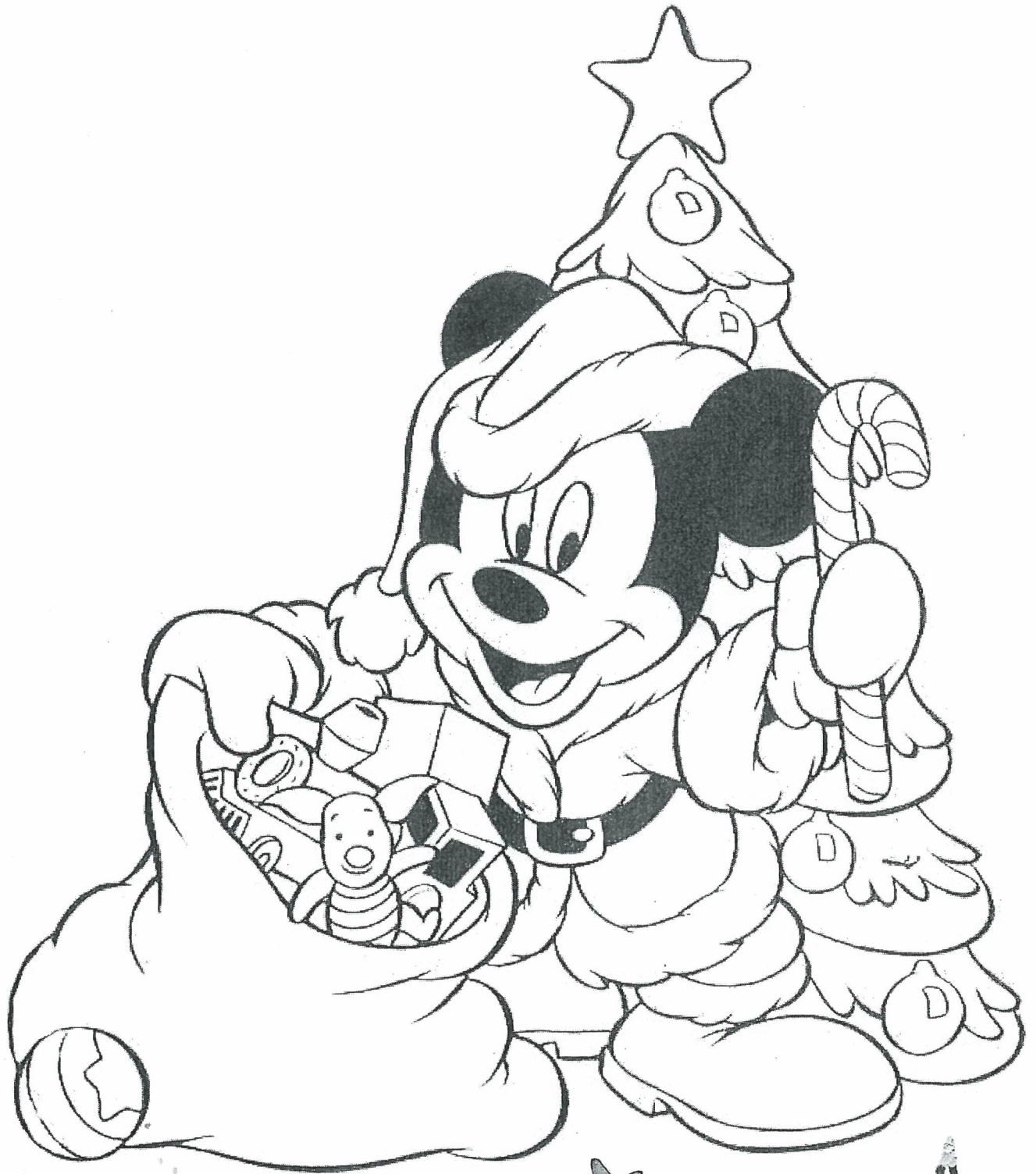
Eva Mead—1/2/2014

Lucas Pawsey—4/2/2011

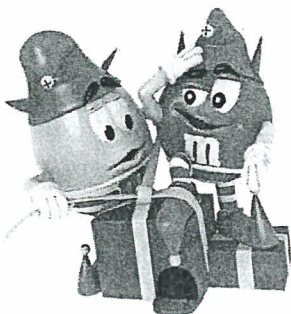




# KIDS CORNER



coloringpagesfun.com



A  
VERY  
MERRY  
CHRISTMAS



Ewen Rural Supplies

## Christmas Order Form 2018

Please return order by no later than Friday 14<sup>th</sup> December.

Fresh Produce Delivered Monday 24<sup>th</sup> December

Orders will be ready for Collection Monday 24<sup>th</sup> December

### Christmas and New Year Trading Hours

Saturday 22 <sup>nd</sup> December	8:30am – 12 noon
Monday 24 <sup>th</sup> December	8am – 5.30pm
Tuesday 25 <sup>th</sup> December	Closed
Wednesday 26 <sup>th</sup> December	Closed
Thursday 27 <sup>th</sup> December	8am – 5.30pm
Friday 28 <sup>th</sup> December	8am – 5.30pm
Saturday 29 <sup>th</sup> December	8:30am – 12 noon
Sunday 30 <sup>st</sup> December	Closed
Monday 31 <sup>st</sup> December	8am – 5.30pm
Tuesday 1 <sup>st</sup> January 2019	Closed

We wish all of our wonderful customers and their loved ones a safe and merry Christmas break.



Ewen Rural Supplies  
38 Wogolin Rd  
Wickepin WA 6370  
P: 08 9888 1002  
F: 08 9888 1105

Merry Christmas from Ewen Rural Supplies

NAME \_\_\_\_\_

Bread and Dairy:

Bakery	Yoghurt
Sunblest White sandwich	Farmers Union Greek 1kg
Sunblest White toaster	Brownes 1kg Yoghurt
Sunblest W/meal Sandwich	Please list flavor...
Sunblest W/meal Toaster	
Sunblest M/grain Sandwich	
Abbotts Whole meal	Milk
Abbotts Rustic White	Full Cream 3l
Abbotts Rye	Full Cream 2l
The One Wholemeal	Full Cream 1l
The One White	Hi Lo 3L
	Hi Lo 2l
Burgen Gluten Free White	Hi Lo 1l
Burgen G/Free Soy & Linseed	Calcium Plus 1l
	Lactose Free 1l
Raisin Toast	
Local Eggs	
Hawksley 67g Carton	
Cream and Custard	
Sour Cream 200ml	
Sour Cream 500ml	
S/Cream Gar&Parsley 200ml	
Thickened Cream 200ml	
Whipping Cream 300ml	
Whipping Cream 600ml	

COUNTRYWIDE SEAFOOD  
FROZEN SEAFOOD RANGE AVAILABLE IN STORE

Merry Christmas from Ewen Rural Supplies



NAME \_\_\_\_\_

## Fresh Vegetables

Baby Asparagus - Bunch	Onions White - kg	
Stringless Beans – kg	Spring Onion	
Beetroot – kg	Parsnip – kg	
Iced Broccoli – Each	Potato – kg	
Brussel Sprouts – kg	Sweet Potato – kg	
Cabbage	Pumpkin Grey – kg	
Chinese Cabbage	Pumpkin Jap – kg	
Cabbage Red	Pumpkin Butternut – each	
	Snow peas	
Capsicum Green – each	Sugar Snap Peas	
Capsicum Yellow – each	Tomato 1kg bag	
Capsicum Red - each		
Carrots – 1kg bag	Tomato Cherry – punnet	
Cauliflower	Tomato Grape - Punnet	
Celery	Zucchini Each	
Bok Choy		
Pak Choy	Baby Spinach 200g Bagged	
Cucumber Green	Mesculin Mix 200g Bagged	
Cucumber Burpless	Baby Cos – Twin pack	
Cucumber Lebanese		
	Alfalfa Sprouts	
Leeks	Other:	
Lettuce Ice Berg		
Mushroom Cup 200g		
Onions Brown – kg		
Onions Red - kg		

Merry Christmas from Ewen Rural Supplies

NAME \_\_\_\_\_

## Fresh Fruit &amp; Meat

Apples Pink Lady – kg		DBC Meat
Apples Sundowner – kg		Beef Scotch Fillet ea
Apples – Granny Smith – kg		Porterhouse ea
Apricots – kg		Rolled Roast Beef
Avocado – each		Premium Beef Mince 500g
Banana – kg		Corn Silverside
Banana Lunch box 750g pack		BBQ Beef Sausages
Blueberries – punnet		Chicken Breasts
Cherries – kg		Chicken Thighs
Grapes Green seedless – kg		Boned Rolled Chicken
Kiwi Fruit – each		Pork Medallions
Lemons – kg		
Limes – kg		
Mangoes – each		
Melon Honeydew – each		
Melon Rock – each		
Melon Water – each		
Nectarines - kg		
Oranges – kg		
Peaches – kg		
Pears – kg		
Pineapple - each		
Plums – kg		
Strawberry – 200g punnet		
Other:		
Passionfruit Pulp		

Merry Christmas from Ewen Rural Supplies





Wickepin  
Community Resource Centre

**Amanda, Jacqui and Susie  
would like to thank  
everyone for their support  
this year!**

*Wishing you all a safe  
and Merry Christmas  
and New Year*



# *Wickepin Public Library* **NEWS**

**Could we please ask that all library items on  
loan from other WA libraries be returned to us  
by 17th December 2018.**



**Due to an update to the State Library online database we are unable to  
request items from other WA Libraries for the remainder of the year.**

**This service will be available again from the 29th January 2019.**



# Yealering

## LPO AND GENERAL STORE, YEALERING

**SIZE** - Land area 1189sqm and premises area 105sqm

**PRICE** - \$290,000 plus stock  
(approximately \$10,000)

**AGENT** - Statewide Business Brokers

**CONTACT**-Wayne Cooper 0407997777 or  
cooperw@swbb.com.au



## Business offers lifestyle, income

A 2.5 hour drive south-east of Perth, the township of Yealering services the large agricultural district of the northern bounds of the Wickepin Shire.

The town's Post Office sits within the a relatively new purpose built facility and includes a general store, which sells groceries, newspapers, drinks and takeaway food. The mail run operates twice a week and there are 50 post boxes and 25 internal slots.

The total land area of the business is 1189sqm, with premises (under the main roof) totaling 105sqm and verandahs over 75sqm.

The business is located opposite the attractive Lake Yealering, enjoys an assured income from the Post Office. It offers a pleasant working and living environment, with the store trading just 5.5 days a week in a supportive farming community and would be suitable for a couple looking for a country lifestyle with income.

The business is also the booking agent for the town's caravan park, located just 300m from the store.

There is also an opportunity to expand the business, with the infrastructure to sell fuel in place but not connected. There is also floor space within the store to expand the kitchen to accommodate further catering opportunities.

The asking price is \$290,000, plus stock of about \$10,000.

### WICKEPIN BOWLING NEWS

Results of the Ladies' Pennants on 28th November:

Williams 0    Wickepin 4

On the 2nd December 4 teams competed in the Ladies' Triple Championships.

The winners were: Shirley Timms, Robyn Mullan and Leanne Smith.

Runners-up were: Marj White, Joan Wyllie and Claire Bayley.

The League Final will be played on the 30th January.

Results of the Men's Pennants on on the 1st December

1st Division:    Narrogin 1    Wickepin 7

2nd Division:    Narrogin 1    Wickepin 5

Results of the Men's Pennants on the 8th December

2nd Division    Lake Yealering 5    Wickepin 1

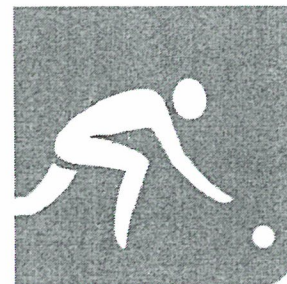
The Men completed their Triple Championships on 2nd December

The winners were: Keith Doncon, Warren Thompson and Jeff Steele

Runners-up were: Graeme Wyllie, Barry McKenna and Alan Wyllie

The Club will be hosting the 'Merino Fours' on the 11th and 12th December.

28 Teams will be competing. Good Luck to all !



**ADMINISTRATION MANAGER**  
**PERMANENT PART-TIME**  
**Wickepin WA**

Facey Group Inc. is requiring the services of a professional and creative administrator preferably with book keeping experience. The Facey Group Administration Manager will work closely with the Executive Officer to oversee the key secretarial, reception and project administration tasks.

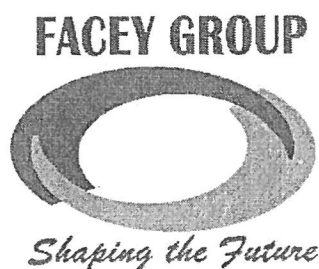
This position is a priority role for the Facey Group to co-ordinate staff administration requirements, the committee, sponsorship administration and the financial administration of the group.

Minimum hours are 24 p/week with flexibility of working days and contact hours along with an attractive remuneration for the right applicant.

For further information on the role and to obtain full job description and selection criteria and application requirements please contact Executive Officer, Sarah Hyde on [eo@faceygroup.org.au](mailto:eo@faceygroup.org.au) or 08 9888 1223.

**Applications close 12 noon Monday 17 December 2018 to be  
addressed to:**

Sarah Hyde, Executive Officer – Facey Group PO Box 129 Wickepin, WA 6370  
or - [eo@faceygroup.org.au](mailto:eo@faceygroup.org.au)







**Wheat Fields  
Upholstery**

0427 981 577  
90632 359



## UPHOLSTERY & REPAIR SERVICES

Household, Automotive, Motor Bike Seats,  
Farm Equipment Covers & Bags in PVC Tarp  
Shock-cord Loops, Shock-cord by metre, Press Studs, Eyelets,  
other fasteners fitted while you wait.  
Small patches welded to Small PVC Tarps using heat gun.  
Chunky Zips in small Canopies re-placed.  
*(Canopies must be clean and removed from vehicle)*

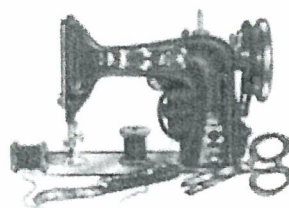
All Natural Cleaning agents for Vinyl, Fabric and Leather *(Removes wine, blood, ink and many more stains)*

Tontine Soft Fill (ideal for pillows) - Tontine 220gm wadding by the metre  
Foam cut to size available on site.

Most other requirements O/N ex Perth *(if ordered before midday)*  
Warwick Fabrics 3-4 days ex Melbourne

### Contact Glynis Robinson

Mob: 0427 981 577 Email: wheatfields@inet.net.au  
50 Campbell Street West, Corrigin WA 6375



*(If searching by street view on Google Maps. They are so outdated, they still show vacant block)*

# MAXIMISING VALUE

- State-wide team of sheep and cattle marketing specialists, sales at Muchea and Katanning, membership of national livestock marketing network and strong relationships across the supply chain ensures optimum competition for producers.
- Dedicated to providing specialised marketing plans, preparation advice and personalised service and support.

**CONTACT MATTHEW (SLIM) DAVEY  
ON 0437 221 081 AND TAKE THE  
WESTCOAST ADVANTAGE**



Be the **FIRST** to see our livestock listings direct to your email.  
Go to **wcw.com.au** and subscribe NOW.



[wcw.com.au](http://wcw.com.au)



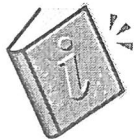
Follow us on Twitter @WestcoastWandL

**rmanetwork.**  
Independent Livestock & Property Agents

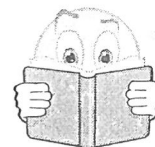


**OFFERING  
QUALIFIED  
ASSESSORS**





# Trade Directory



## Jim's Pest Control

Servicing Pingelly & Surrounding Districts



**Spiders, Flies & Mosquito's Service  
to Exterior of House.  
(Includes garage)**

**Interior Service & Roof Dusting Available  
at additional cost.**

**We also specialize in General pests  
including Ants, Cockroach  
and Rodent control etc.**



**Just call JIM for a no obligation  
FREE Quote**

**Mob 0409570866**

**Email: [jimspest@hotmail.com](mailto:jimspest@hotmail.com)**

**3 Months warranty on all work done**

Locally Owned, Locally Operated and  
Serving the Community Since 1985



**121 Federal Street, NARROGIN**

**9881 2288**

Clinic Hours:

**Monday, Tuesday & Friday  
8.30am to 5.00pm**

email: [familyeyecare@westnet.com.au](mailto:familyeyecare@westnet.com.au)

**Also at: 173 Clive Street, KATANNING**

**9821 1600**

Clinic Hours:

**Wednesday & Thursday  
8.30am to 1.45pm and  
2.30pm to 5.00pm**

## Rural Fencing Contractors

**CR & AJ McKenzie**

- Rural Fencing
- Security Fencing
- Timber Fencing
- Home & Yard fencing
- Sheep & Cattle Yard Construction

Clint McKenzie  
0458 985 163

[macag78.cm@gmail.com](mailto:macag78.cm@gmail.com)

PO Box 10, Narrogin, WA, 6312



**HARRIS  
ZUGLIAN  
ELECTRICS**

Hachzed Pty Ltd trustee for HZE Unit Trust trading as

Harris Zuglian Electrics

ABN: 85 034 929 787

ACN: 141 014 306

Phone: 9063 2911

Fax: 9063 2922

**For all your electrical works, repairs  
and installations in the  
Wickepin and Districts area.**

**Phone:**

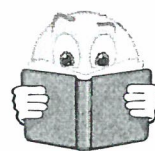
**Gary Harris *OR* Aaron Steele  
0417 632 289 0417 632 298**



**383 Walton Street CORRIGIN WA 6375**

**Email: [hzelectrics@bigpond.com](mailto:hzelectrics@bigpond.com)**





## NgN-Cuby Stock Feed

Narrogin  
GasworX

### ALL YOUR PET AND LIVESTOCK NEEDS

HORSE - Feed-Nutrition-Medical-Accessories

POULTRY-Mixes-Crumbles

DOG-Kibbles -Rolls-Tins-Accessories

CAT-Biscuits

BIRD -Seed Mixes- Aviary-Parrot

SHEEP-Cubes

HAY BALES & ROLLS

DELIVERIES AVAILABLE  
WEEKLY

SPECIALIST FEEDS  
AVAILABLE ON ORDER  
FOR ANY ANIMAL

[www.narrogingasworx.com.au](http://www.narrogingasworx.com.au)

Ph:9881 2005

24 Fairway Street Narrogin

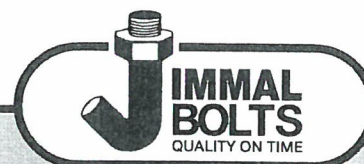
### ST JOHN'S ANGLICAN CHURCH

Johnston Street, Wickepin - Phone 9843 9045

Services held at 8.00am

1<sup>st</sup> & 3<sup>rd</sup> Sundays - All welcome

Stay for a cuppa after the service



### SPECIALISED BOLT MANUFACTURERS

A.B.N. 59 949 572 071

22 Colray Avenue Osborne Park 6017.

TEL: (61-8) 9444 1895 FAX: (61-8) 9444 8933

Email: [accounts@jimmal.com.au](mailto:accounts@jimmal.com.au)

Website: [www.jimmal.com.au](http://www.jimmal.com.au)

## WHEATBELT SPREADING SERVICE



### Spreading for a Sustainable Future

Wickepin, Yealering, Harrismith, Tincurrin, Toolibin, Dudinin, Wagin

and surrounding districts

Spreading Lime, Gypsum, Dolomite and Fertilizers



Multi-Spread Units

Fitted with GPS and Load Cells



Phone: Richard: 0429 137 164

Karen : 0427 778 102

Local Friendly Service

Email: [wheatbeltspreading@gmail.com](mailto:wheatbeltspreading@gmail.com)

Richard & Karen Rushton PO Box 88, Wickepin, WA 6370



## G.S & B Madej

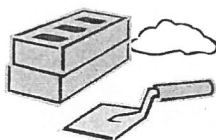
- Concreting
  - Bricklaying
    - Brick paving
    - Liquid Limestone / concrete



Greg: Mob: 0427 812 006

Ph: 9881 2006

Email: [gsbmadej@westnet.com.au](mailto:gsbmadej@westnet.com.au)



Servicing the  
Wickepin area  
for 18 years

- ◆ Bobcat
- ◆ Excavator
- ◆ Ditchwitch
- ◆ Post Hole Digger
- ◆ Tip Truck

## Dews Excavations

- House Pads
- Shed Pads
- Subsoil Drains
- Septic Tanks
- Leech Drains
- Trenching for Utility Connections
- Drainage
- Yard Clean Ups
- Yellow Sand
- Gravel
- Bluemetal
- Cracker Dust
- Road Base
- Garden Soil



Call Rob on 0428 836035

FOR ALL YOUR PEST CONTROL NEEDS  
CONTACT CRAIG AT

**McPest**  
**PEST CONTROL**

Ph: 9880 1152 / 0429 801 152

All jobs interior and exterior  
considered at competitive prices by  
a local qualified technician based in  
Kulin.

*Specialising in termite inspections,  
termite treatments/barriers and  
reports.*





## BENJAMIN KITOW CONSTRUCTIONS

Registered Builder 13506

Framed Homes  
Re-Roofing  
Extensions  
Bathroom Renovations  
Asbestos Removal  
Insurance Work

Phone: 0437 378 492  
bkconstructions@live.com.au

## ANGWIN PLUMBING AND GAS

Do you need a plumber or gas fitter? Then call Rhys Angwin we are a friendly plumbing business operating throughout the Upper Great Southern & surrounding areas. We specialise in all types of plumbing and gas work ranging from:

- 24/7 emergency care
- Leaking taps & toilets
- Burst pipes
- Blocked drains and pipes
- New hot water unit installations
- Ovens, hotplates, dishwashers and fridges
- Bathroom, Laundry and Kitchen reno's



And much more!!!

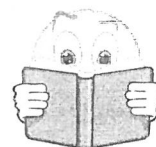
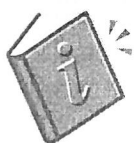
Call Rhys with whatever plumbing or gas problem you have.

Pensioner discounts!

PL: 8498 GL: 014986

**0400-165-265**

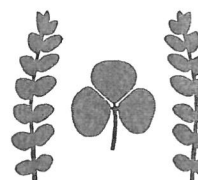




## **Ballard Cleaning Pasture Seed and Canola Specialists**

**North Road Tincurrin**

**Ring Neil 9883 2005 or 0428 832 053**



**Canola cleaning and seed treatments at the best price  
Gravity grading, the ONLY way to get the best quality  
seed for sowing**

**Bags, bulka bags or bulk New bulka bags**

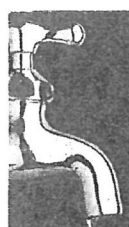
**1000 seed count and germ tests**

**Pasture seed, all species and varieties**

**Serradella de-hulling specialists**

**New destoner for removing sand and stones**

**Bookings by appointment**



**MELCHIORRE  
PLUMBING & GAS**

**Brad Melchiorre**

0424 657 097  
melchiorre\_plumbing@hotmail.com

3495  
015227

FOR ALL YOUR PLUMBING NEEDS:  
Commercial • Industrial • Residential • Maintenance

## **Peter Rundle MLA**

Member for Roe

Narrogin Office  
PO Box 378  
Narrogin WA 6312  
Ph 08 9881 1225  
Fax 08 9881 3082

Esperance Office  
107 Dempster St  
Esperance WA 6450  
Ph 08 9071 6555  
Fax 08 9071 6788

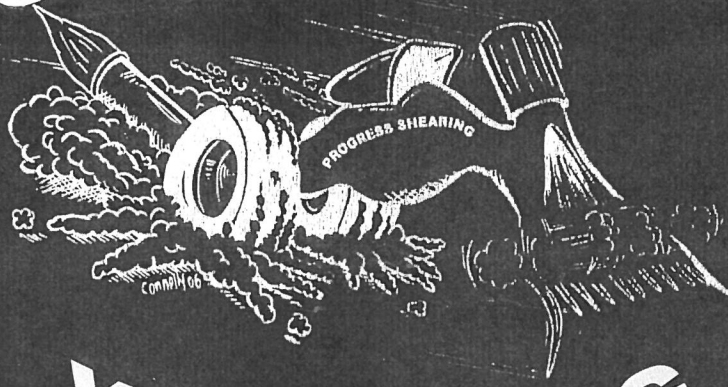
Peter.Rundle@parliament.wa.gov.au  
www.peterrundle.com.au  
@PeterRundleMLA  
facebook.com/PeterRundleRoe



**THE NATIONALS** for Regional WA



# **PROGRESS SHEARING**



# **YEALERING**

**Professional teams  
available state-wide**

---

**Over 25 years' experience  
in the shearing industry**

---

**Competitive contract and cost-plus rates  
Woolpress and shearing head hire**

**If you are unhappy with your current  
shearing situation, give me a call for  
an obligation free quote.**

**CONTACT GREG**

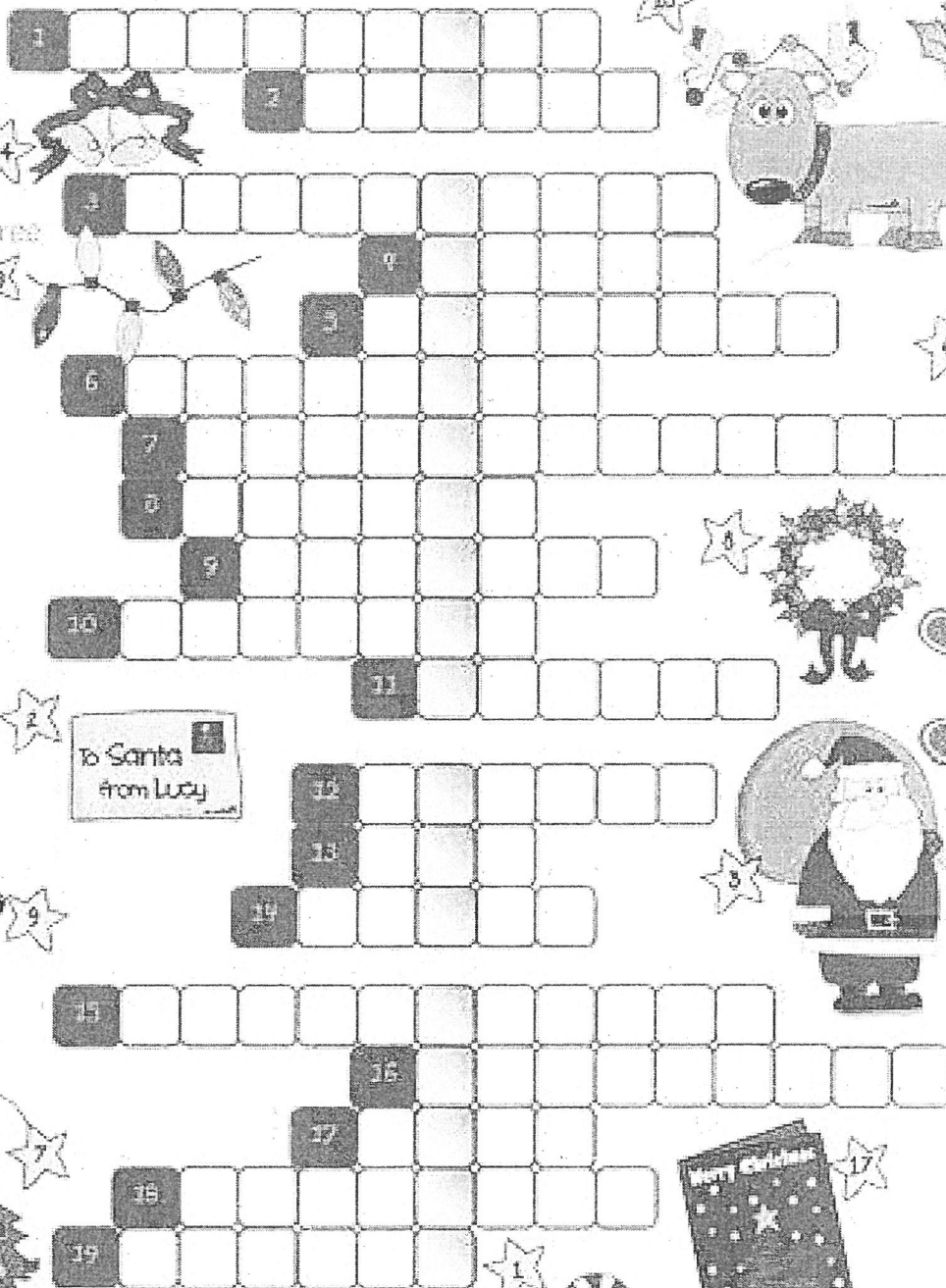
**P: 0429 651 161**

**E: [egor@westnet.com.au](mailto:egor@westnet.com.au)**

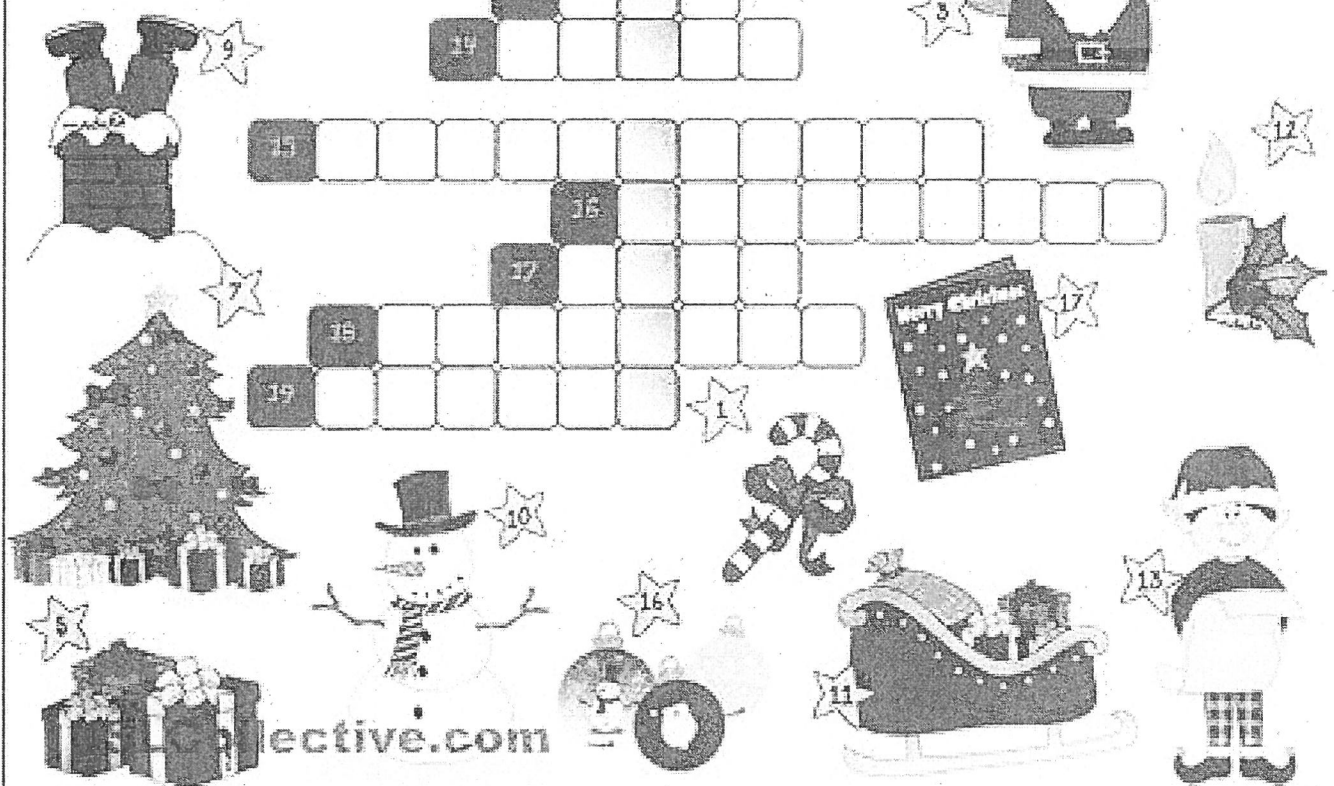
# Christmas fun

Match the words to the correct pictures to complete the crossword. Then find a secret message.

bells  
candle  
candy cane  
card  
chimney  
Christmas tree  
elf  
gingerbread  
holly  
letter  
lights  
ornaments  
presents  
reindeer  
Santa Claus  
sleigh  
snowman  
stocking  
wreath



To Santa  
from Lucy



ective.com

The secret message is \_\_\_\_\_ lead home.



# COMMUNITY CALENDAR

## DECEMBER

Tue 11th	Health Centre—Pathology (appointments only) 8.30am—4.30pm
Tue 11th	He Shed She Shed at the Old Recycling Shed- Richter St @ 9am
Tue 11th	Water Aerobics @ 5pm.
Tue 11th	Yealering Primary School Presentation Night at Yealering Town Hall @ 6.30pm.
Wed 12th	Morning Swimming 6am-7am.
Wed 12th	Arts & Crafts—Joyner Street @ 9.30am
Wed 12th	Health Centre closed
Thur 13th	Health Centre closed
Thur 13th	Last day of School Term
Fri 14th	Health Centre open 8.30am—4.30pm
Fri 14th	Morning Swimming 6am-7am.
Fri 14th	Youth Day Kulin Waterslide - Bus leaves 11.30am
Fri 14th	Nominations close for community awards
Fri 14th	Shire office closes 3.00pm until Wednesday 2nd January 2019
Sun 16th	Anglican Church—Christingle and Carol service—8am
Sun 16th	Wickepin Community Christmas Tree @ Community Centre 4pm.
Mon 17th	Morning Swimming 6am-7am.
Tue 18th	He Shed She Shed at the Old Recycling Shed- Richter St @ 9am
Tue 18th	Water Aerobics @ 5pm.
Wed 19th	Australia Day Committee meeting—12 noon
Wed 19th	Morning Swimming 6am-7am.
Thur 20th	Facey Group Christmas Party @ Wickepin Sports Club 5.30pm-9pm.
Fri 21st	Morning Swimming 6am-7am.
Sun 23rd	Yealering Christmas Tree
Mon 24th	Morning Swimming 6am-7am.
Mon 24th	Wickepin Community Resource Centre closed until Tuesday January 29th 2019
Tue 25th	Christmas Day service—Anglican Church service 8am
Tue 25th	Christmas Day
Wed 26th	Morning Swimming 6am-7am.
Wed 26th	Boxing Day
Fri 28th	Morning Swimming 6am-7am.
Mon 31st	Morning Swimming 6am-7am.
Mon 31st	New Years Eve

## JANUARY 2019

Tue 1st	New Years Day
Wed 2nd	Wickepin Shire offices open
Sat 26th	Australia Day Breakfast & Citizen of the Year Award Presentation @ Yealering
Tue 29th	Wickepin Community Resource Centre reopens

## FEBRUARY

Sun 3rd	Anglican Church—8am
Mon 4th	School Resumes
<b>Mon 4th</b>	<b><i>Watershed news resumes for 2019</i></b>
Sat 23rd	Wickepin Triathlon

**The Contact for the Watershed is at the CRC. Phone 9888 1500 or Fax 9888 1588**

Editorial contact: Hazel Green Phone 9888 1156

Email: [watershed@wn.com.au](mailto:watershed@wn.com.au)

Advertising Rates: Full Page \$30

½ page \$15

¼ page \$8

Business Card Size \$5